



NSW DOUBLES CHAMPIONSHIPS

27 May 2023
North Ryde Common

POWERED BY
JINDY
DISC GOLF
SHOP



NSW
DISC GOLF





SCHEDULE

Saturday 27th May

8:30 Players registration commences

9:00 Mandatory players meeting

9:30 **Round 1** commences (alternate shot)

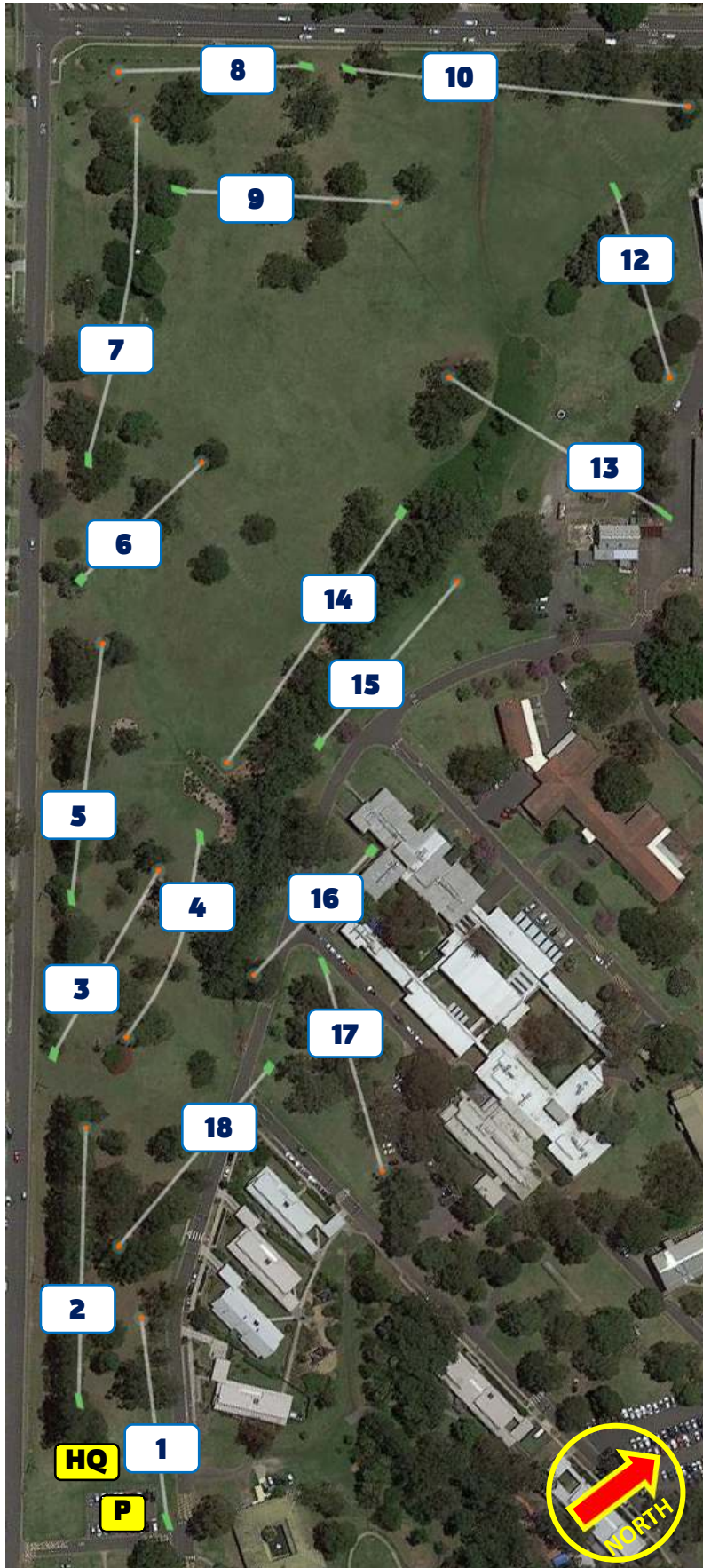
12:00 Lunch (bring your own)

13:15 Meet at Event HQ for round 2 groups

13:30 **Round 2** commences (best shot)

16:30 Round 2 finishes (approx.)

16:45 Prize Presentation



NORTH RYDE TEMPORARY 18

HOLE	PAR	DISTANCE (m)
1	3	82
2	3	109
3	3	84
4	3	87
5	3	102
6	3	67
7	4	138
8	3	75
9	3	87
10	4	153
11	3	72
12	3	78
13	3	102
14	3	122
15	3	85
16	3	81
17	3	85
18	3	93
TOTAL	56	1702

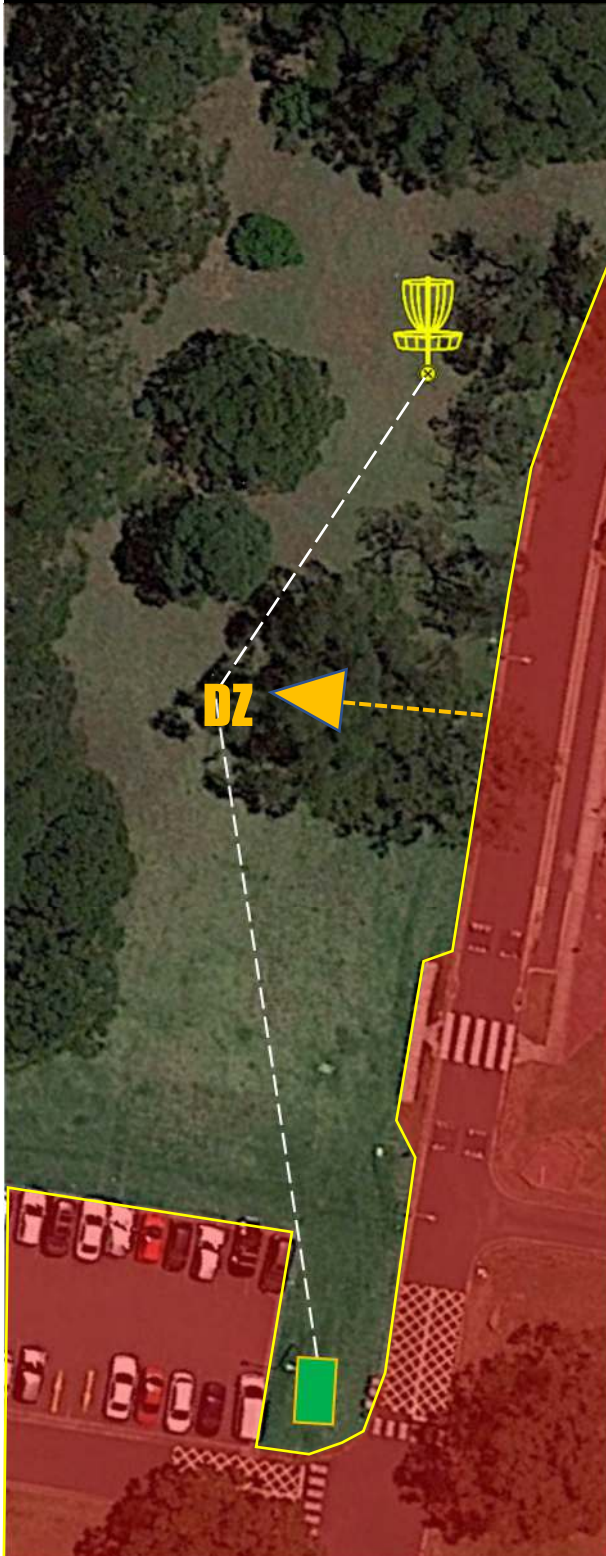
P Parking

HQ Event HQ

HOLE 1

PAR 3

82 M



Backhand turnover or forehand hyzer.

MANDO – Left from the big gumtree.
Drop zone next to the tree.

OB – Road on the right hand side (edge of concrete curb) and tree line on the left side. Car park also OB. Normal OB rules apply.

HOLE 2

PAR 3

109 M



Same as public hole 10 (long tee).

OB – Inside tree line on both left and right sides, and in line with the tree behind the basket Normal OB rules apply.

HOLE 3

PAR 3

84 M



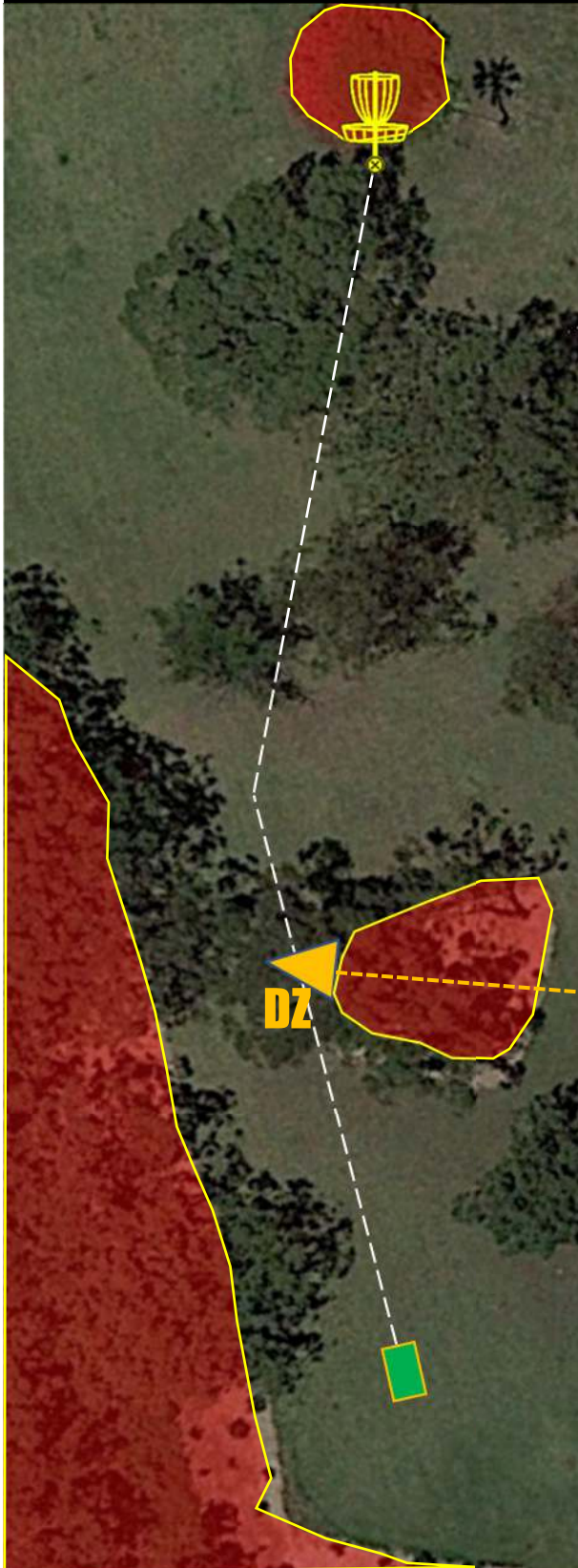
Same as public hole 11 (long tee).

OB – Line of trees (inside edge) on the left hand side (shouldn't come into play) and OB very long past hole 4 fairway. Also garden bed short and right of the basket where inside edge of the outer trees indicates the OB line. Normal OB rules apply.

HOLE 4

PAR 3

87 M



Same as public hole 17 (long tee).

MANDO – stay left of the large gum tree in garden bed. Drop zone next to the tree.

OB – left side (defined by inside edge of trees) and thick bush behind the basket. Normal OB rules apply.

HOLE 5

PAR 3

102 M



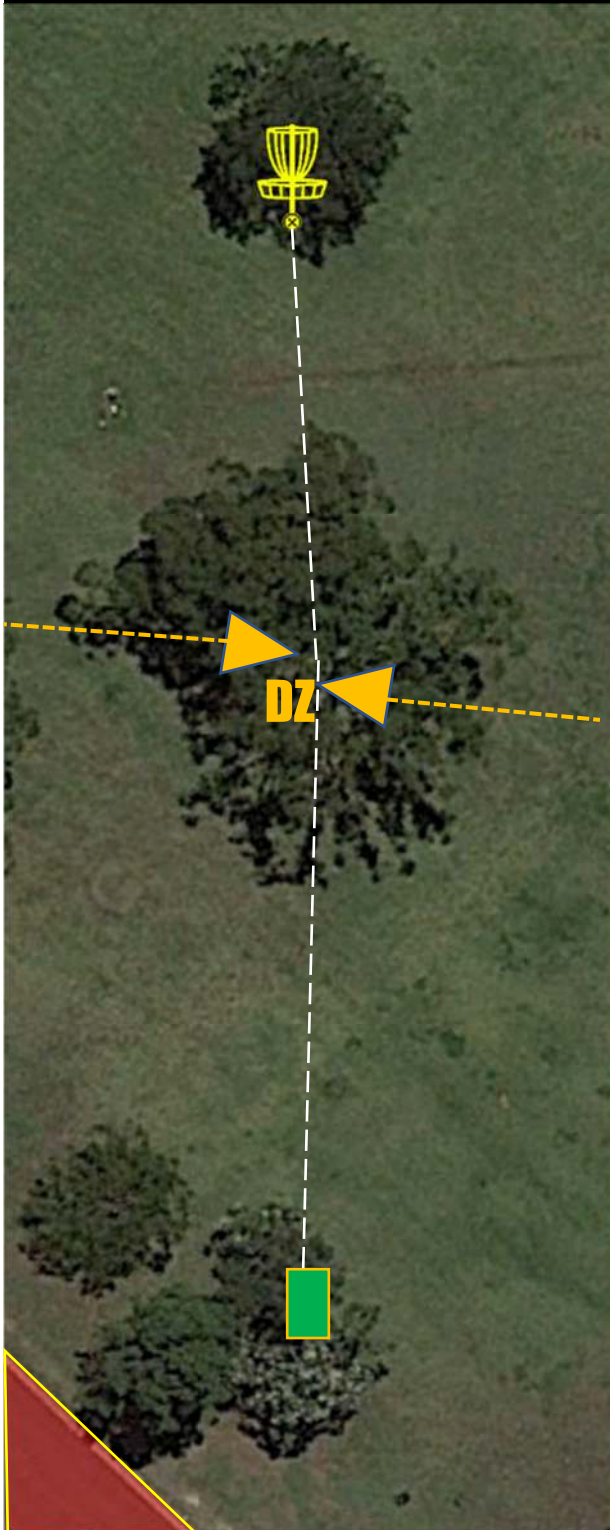
Same as public hole 12 (long tee).

OB – Tree line (inside edge) on the left side and garden bed on the right (defined by inside edge of trees). Normal OB rules apply.

HOLE 6

PAR 3

67 M



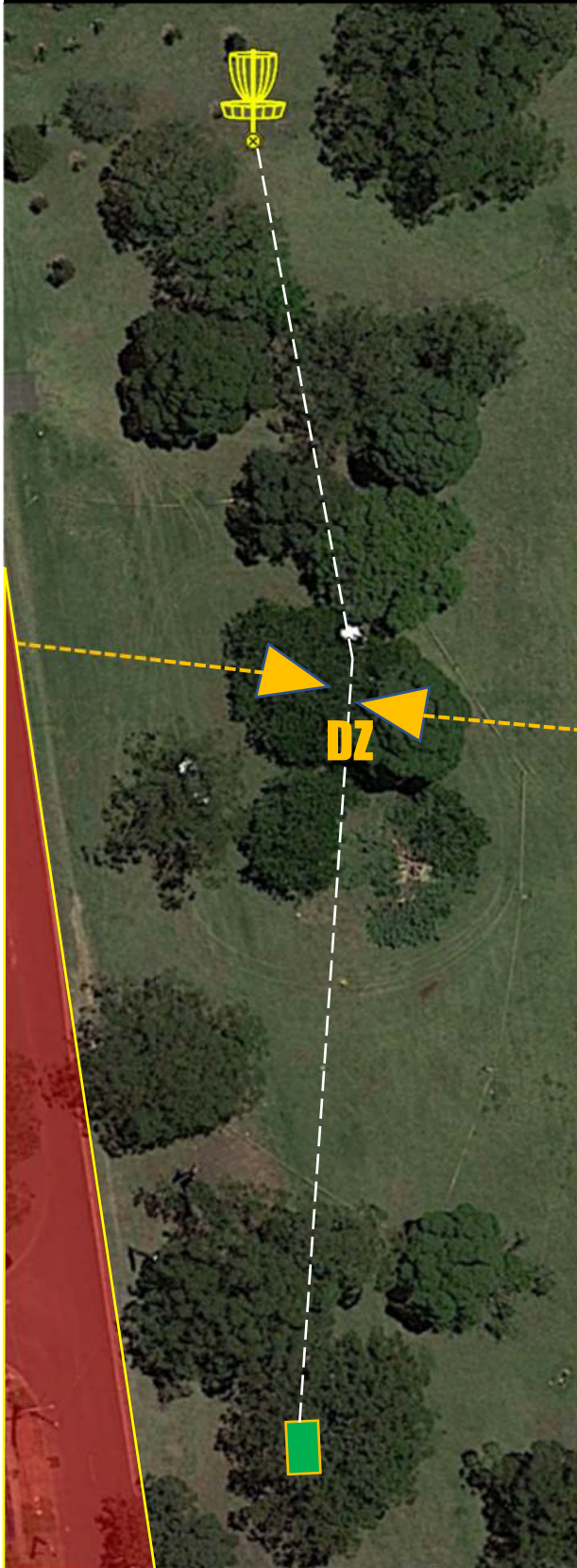
Same as public hole 13 (long tee).

MANDO – Double mando with drop zone between the trees.

HOLE 7

PAR 4

138 M



Same as public hole 14 (long tee).

MANDO – Double mando, drop zone in the middle of the trees.

OB – Road on left hand side (edge of concrete curb). Normal OB rules apply.

HOLE 8

PAR 3

75 M



The third double mando in a row with trouble on the right.

MANDO – Double mando with drop zone in the middle of the fairway.

OB – Footpath (or curb where path doesn't exist) marks edge of OB on right and behind the basket. Normal OB rules apply.

HOLE 9

PAR 3

87 M



Same as public hole 15. There's no OB of note and no mandos. Just pick a line.

HOLE 10

PAR 4

153 M



A short and straight-forward par 4. There may be casual water midway down the fairway. Players landing in this muddy area can take relief backward on the line of play to the nearest **safe** point.

OB – Footpath marks edge of OB on left side. Normal OB rules apply.

HOLE 11

PAR 3

72 M



A low ceiling tight shot bending around to the left.

OB – Footpath marks edge of OB on right side. All fences on the left side or on the building. Normal OB rules apply.

**SPOTTER
REQUIRED!**

HOLE 12

PAR 3

78 M



Through a gap off the tee, uphill to a well protected basket. Beware the car park behind and left.

OB – all concreted areas and roads on the left and behind the basket. Normal OB rules apply.

HOLE 13

PAR 3

102 M



Two choices – go for it downhill across the creek or layup short. If going for the basket from the tee we recommend a spotter goes down to watch where discs land. If your disc goes in the deep rough and spotter doesn't find it straight away, throw a provisional.

OB – only the road where the tee is located and the buildings (any concreted area) on the left. The long grass before the basket is NOT OB.

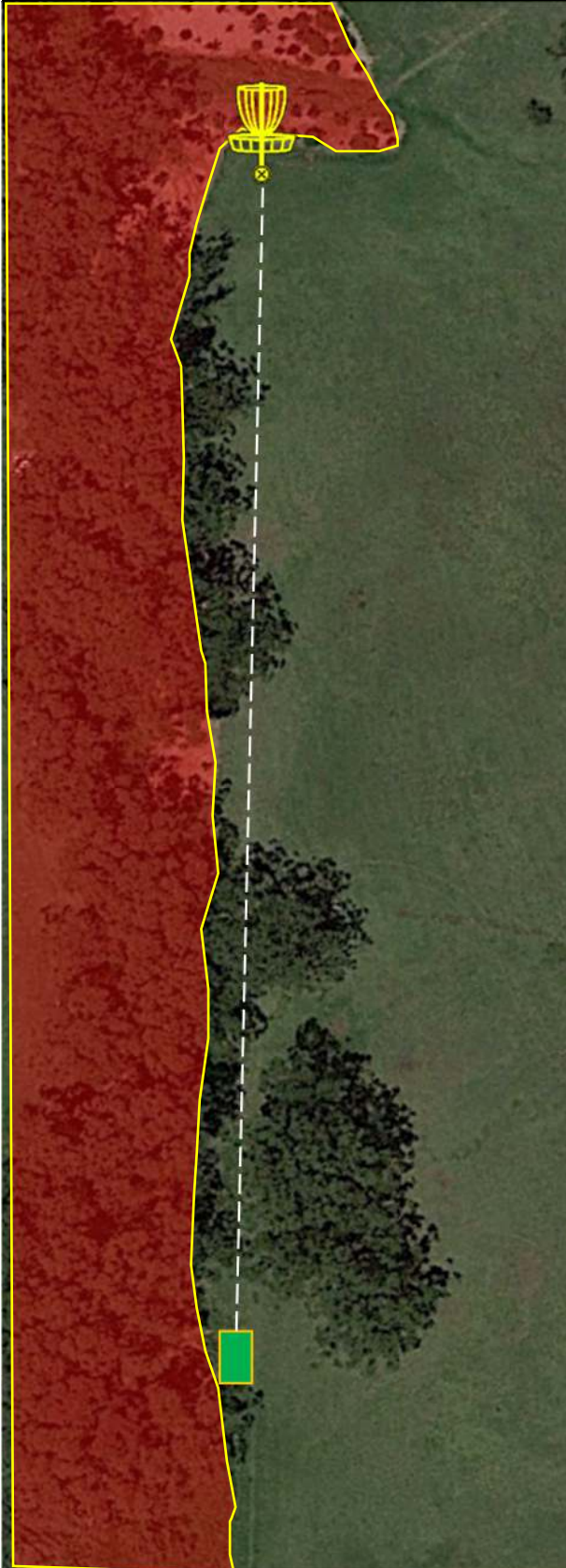
REMEMBER: you have 3 minutes to search for a lost disc. Timer starts when everybody arrives and all players must actively search.



HOLE 14

PAR 3

122 M



Same as public hole 7 (short tee)

OB – down left side and behind the basket. Inside edge of outermost tree marks the OB line. Normal OB rules apply.

HOLE 15

PAR 3

85 M



Beware the deep rough on the left. This is not OB. Use a spotter if you wish. Consider throwing a provisional if your shot goes deep left.

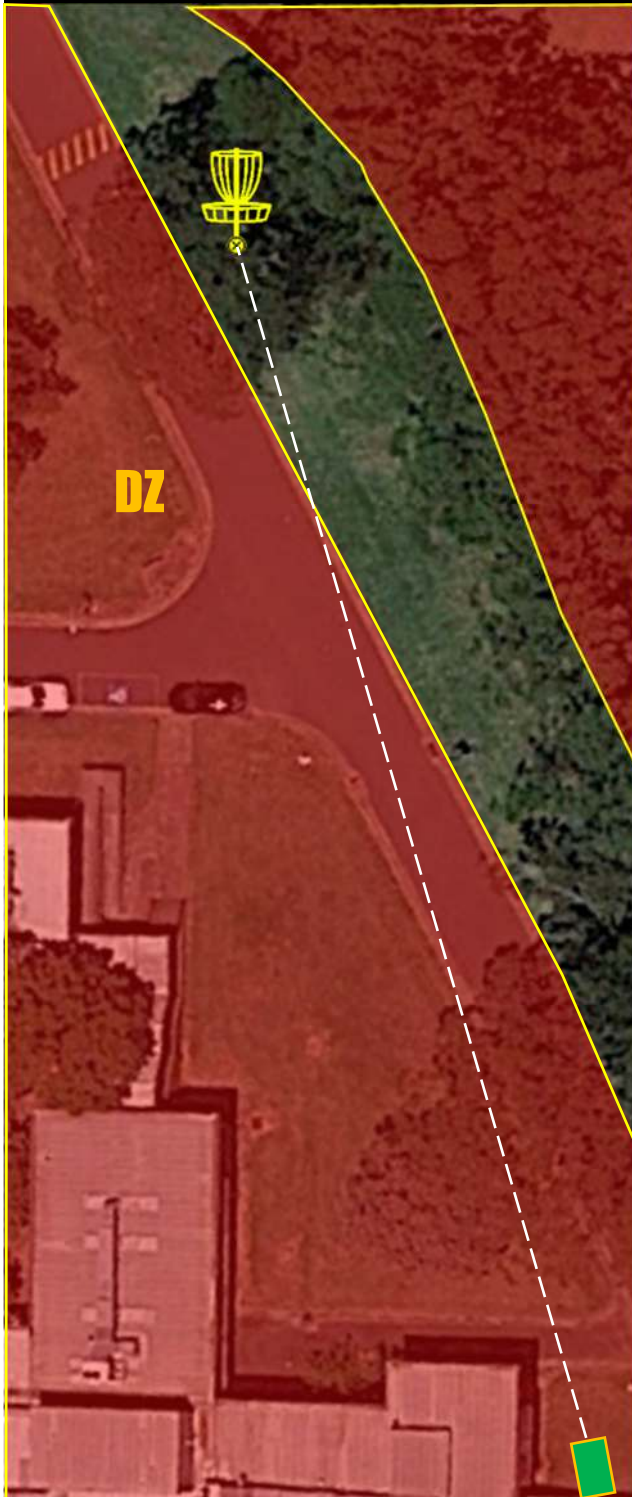
OB – Road on the right hand side (edge of concrete curb). Normal OB rules apply.

REMEMBER: you have 3 minutes to search for a lost disc. Timer starts when everybody arrives and all players must actively search.

HOLE 16

PAR 3

81 M



A narrow island hole. Layup short or go for it.

OB – the road and everything left of it is OB. Long grass on the right is also OB as well as the drain behind the basket. All OB shots from the tee proceed to the drop zone (across the road from the basket). Normal OB rules apply from the second shot onwards.

HOLE 17

PAR 3

85 M



Pick a line down through the trees. Make sure you stay out of the carpark on the left.

OB – Roadway on either side including the paved carpark area. Concrete edge of burb denotes OB line. Normal OB rules apply.

HOLE 18

PAR 3

93 M



A longer version of public hole 9 without the mando.

OB – Road on the left hand side (edge of concrete curb) and inside edge of trees adjacent to hole 2. Normal OB rules apply.



PARKING & EVENT HQ

Event HQ will be located next to the car park at the eastern end of North Ryde Common. Use **“30 Twin Road, North Ryde”** for your GPS. There will only be limited parking in this car park, but there is plenty of free parking on Twin Road and Norton Road nearby.

NOTE: there are no toilets on site. Nearest public toilet is at Gannan Park (opposite 1 Buna St, Ryde).

CONTACT

Any questions or issues before or during the event, please contact the Tournament Director, Priit Koiv on 0472 513 488 or message Sydney Disc Golf Club on Facebook.

SCORING

Disc Golf Metrix will be used for scoring the event:

<https://discgolfmetrix.com/2518149>

SPECIAL THANKS

A special thanks to Jindy Disc Golf Shop for sponsoring this event. Go buy their stuff!



DOUBLES FORMAT

Alternate Shot Doubles (Round 1)

The team selects a player to throw the tee shot at the beginning of the round. The other player then throws from the subsequent lie, and play alternates until the round is completed. If the wrong player on a team throws, another team must call it immediately, like a foot fault. The team receives a warning, and the correct player throws. Subsequent violations incur a one-throw penalty.

For any violation that requires a re-throw (stance violation, provisional throw), the same player throws.

Best Shot Doubles (Round 2)

Both players throw from each lie (starting with the tee shot), then the team decides which of the resulting lies to continue play from. They repeat until one of them completes the hole. The second player does not throw if the first player holes out first.

The group may take a reasonable amount of time to select which lie they want before the 30-second play clock starts.

A disc that is picked up without being marked is gone forever and the team must throw from the other lie. If the second lie is picked up, it must be replaced in accordance with PDGA rules. All lies must be marked according to PDGA rules.

If the first player throws from the wrong lie, the second player may still throw from the correct lie.

In case of injury or disqualification, one partner may play alone, throwing one shot at each lie (essentially playing singles). The TD may move a solo player to another division depending on their rating.

THANKS TO OUR SPONSOR

JINDY
DISC GOLF
SHOP



jindydiscgolfshop.com